

REPORT



March 27 – April 30, 2022

Assessing the capacity of regional hospitals to provide life-saving maternal and newborn health care to refugees from Ukraine





***The Report on Assessing the capacity of regional hospitals to provide life-saving maternal and newborn health care to refugees from Ukraine** was prepared by Dr. Saidkasim Sakhirpov, Humanitarian Reproductive Health Coordinator, and Dr. Rodica Gramma, SRH Consultant, with the support of the United Nations Population Fund (UNFPA) in the Republic of Moldova.*

The assessment reflects the views of the authors, and does not represent the views of UNFPA, or any affiliated organizations.





CONTENT

1. BACKGROUND
2. INSTITUTE OF MOTHER AND CHILD
3. MUNICIPAL CLINICAL HOSPITAL No. 1 „Gheorghe Paladi”
4. BALTI PERINATAL CENTRE
5. CAHUL PERINATAL CENTRE
6. EDINET PERINATAL CENTRE
7. CEADIR LUNGA PERINATAL CENTRE
8. MUNICIPAL CLINICAL HOSPITAL No.3 „Sf. Treime”
9. INSTITUTE OF ONCOLOGY

BACKGROUND

The regionalized Perinatal Services in the Republic of Moldova has been operating since 1998, based on the principle of the three levels (primary, secondary and tertiary).

Level I, consisting of district maternity hospitals, where hospitalized women with physiological births and at minimal risk, takes place and care for newborns with a birth weight of 2500 gr and more;

Level II, consisting of 10 perinatological centers (nine inter-rayonal Centers and the Perinatological Center of at Municipal Hospital no. 1 in Chisinau), in which births take place at 32-37 gestational weeks with moderate risk and is insured care of newborns weighing 2000-2500 gr.

Level III, is provided by the Perinatological Center of the Institute of Mother and Child, located in Chisinau, which is the only institution of its kind in the republic, where the combination of curative-prophylactic, training and scientific activity takes place. The Institute of Mother and Child provides services to all high-risk births and to newborns weighing from 1500 gr.

During the last years the birth rate level decreased continuously. As a result, the primary level maternity hospitals, with less than 300 births per year, were closed (eg. Vulcanesti, Soldanesti, Basarabeasca, Taraclia, Donduseni, Rascani, Ocnița, Briceni, Leova, Glodeni, Fălești). Thus, at the moment a Perinatal Center caters to the population of 3-4 districts.

This reform process has positive aspects, on the one hand, because, at the moment, the Republic of Moldova is facing an acute shortage of medical staff, and all necessary human resources (gynecologists, neonatologists, anesthesiologists) could be concentrated in such institutions – inter-rayonal Perinatal Centers. At the same time, it is much more cost-effective to equip such a centers with high-performance equipment.

On the other hand, the regionalization of sexual and reproductive health (SRH) services increases the distances for the population from rural localities and respectively decreases the accessibility to these services. In many localities there are poor infrastructure, very bad roads, reduced public transport and the travel costs are considered high by vulnerable low-income groups. This situation increases the risk of delaying of the necessary medical care, late diagnosis of

pathologies related to sexual and reproductive health, increases the risk of serious complications.

During the discussions with the administration and staff of the visited perinatal centers, the assessment team was often told that it is necessary to initiate activities that would make SRH services more accessible for the rural population, including the outreach services. At the moment, in the obligations of the consultative sections of the Perinatal Centers are included outreach regular visits to rural areas in the adjacent regions. This work is not done due to lack of medical transport and necessary equipment (gynecological chairs, portable ultrasonography, etc.) in the rural medical institutions.

Strengthening the technical capacities of perinatal centers with mobile clinics for regular visits (out-reach visits) to rural territories would be a real solution for increasing the population's access to SRH services.

In the same time, in many rural areas of the country there is a shortage of family doctors. For many patients, the only access to healthcare is the pre-hospital emergency healthcare service (112). However, there are not enough teams in many Emergency Stations at the district level due to the lack of available ambulances. This situation increases the waiting time for the ambulance to reach the patients in critical conditions. According to official data provided by the National Center for Prehospital Emergency Assistance, about four hundred (400) births take place annually at home or in an ambulance.

Many refugees from Ukraine are housed in the community in the rural areas of the country, so there is a risk of overburdening the pre-hospital emergency care service. Strengthening this system with additional ambulances would reduce the burden of a large number of requests on a single team and would significantly reduce waiting time for the ambulance.

OBJECTIVE OF THE ASSESSMENT

The assessment was conducted through visits to the districts and territories in the targeted institutions, direct discussions with the managers and staff of the perinatal centers, as well as through the analysis of the official statistical data available with reference to the activity of the healthcare institutions.

The assessment was made in the important medical institutions for the North, Center, and South regions of the country, based on the plan for regionalization of health services, according to the discussions with representatives of the Ministry of Health of the Republic of Moldova.

At the same time, one of the selection criteria of the visited institutions was their location in the districts on the border with Ukraine, where the border crossing points are nearby, and the number of refugees settled in communities or institutions (accommodation centers) are higher.

The purpose of the evaluation was to understand the capacity and the current needs of the medical institutions providing sexual and reproductive health services, so that they can provide quality services, without discrimination and according to the needs of all women who will seek assistance, including Ukrainian refugees.

The assessment included all the capacities of the institutions to provide obstetric care as well as the provision of the necessary services in the assistance of gynecological emergencies. Thus, the capacities of the perinatal centers in the visited institutions were assessed, the level of their capability with the necessary equipment and supplies in obstetric and gynecological care, the number of operating rooms and delivery rooms, their equipment, and the capacities to provide intensive care to the women in childbirth and to the newborns.

Nine (9) medical institutions were evaluated, namely seven (7) perinatal centers, one multidisciplinary hospital (Municipal Hospital no.3) that has a gynecology department and the Oncology Institute.

The visited perinatal centers are the following: Institute of Mother and Child, Municipal Clinical Hospital no.1, Chişinău, Bălţi Perinatal Center, Edineţ Perinatal Center, Cahul Perinatal Center, Ceadir Lunga Perinatal Center, and Comrat Perinatal Center.

1. The Public Medical Sanitary Institution Institute of Mother and Child (IMC)

General context:

The IMC is a medical institution of 3-rd level, which offers care at the national level. The Institute is a leader in the field of obstetrics, gynecology, neonatology, pediatrics, and surgery that assures diagnosis, medical care, and rehabilitation of approximately 40.000 hospitalized patients and 150.000 outpatients consulting from all over the country. Also, IMC records over **four thousand and seven hundred (4,700) live births** annually. Now, the institution has a total capacity of 1003 beds and more than 2,000 employees (both medical and administrative staff).

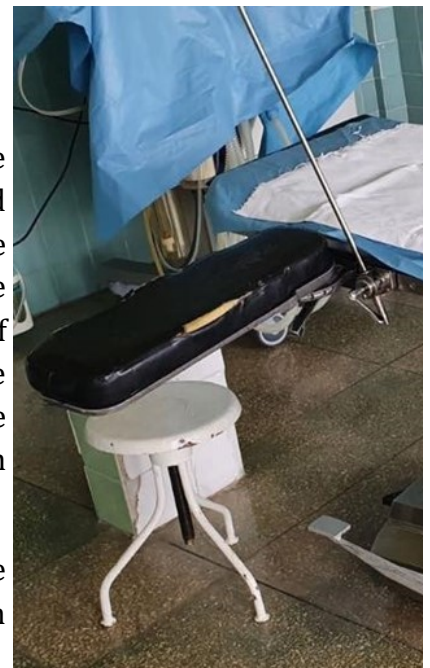
In addition to the clinical activity, IMC conducts an extensive methodological and scientific activity at national level. Within the IMC are located the clinics and departments of the medical university, the Institute being the clinical base for the training of medical students, residents, and doctors in continuous education in the field of obstetrics and gynecology, neonatology, and pediatrics.

Considering the crisis created by COVID-19, the Institute of Mother and Child, has redesigning special sections for the treatment of severe and very severe patients with COVID-19. During of the 2021, IMC have registered 1025 COVID-19 cases and around of four hundred(400) health workers were directly involved in the treatment of COVID-19 cases.

Refugees Assistance:

The Institute managed to provide permanent medical care to Ukrainian refugees (children and women) that need medical assistance. Around 20 refugee patients are consulted daily in the institution, of which 1/3 are hospitalized in the IMC departments. Thus, since 24th of February 2022 about seven hundred (700) refugees have benefited from quality specialized medical services. At the time of the assessment twenty-nine (29) refugee women gave birth, of which 9 - by caesarean section.

As IMC is in Chisinau, where majority of refugees are coming, the assessment team assumed and concluded from



the findings and available data that a growing number of refugee women from Ukraine will continue to ask for medical care at this institution.

Assessment Findings:

The institute has two (2) obstetrics departments, one department with seven (7) delivery rooms and, respectively, the second department has two (2) delivery rooms. There is an operating department, with three (3) theaters for obstetric interventions and four (4) theaters for gynecological interventions.

The institution recently conducted the renovation of two (2) obstetric operating theaters and seven (7) delivery rooms. It is necessary to repair the remaining five (5) operating theaters.

There were no funds distributed or allocated for the purchase of the equipment. While some rooms were repaired, the equipment in them is outdated and worn.

Most of the present equipment dates back to the period from 1998-2001, some were received through humanitarian aid from organizations abroad, already having a certain degree of wear and tear at the time of donation.



Thus, most of the equipment is frequently breaking down, including the lamps for the operating theater and delivery rooms.

Operating tables, delivery tables and gynecological chairs are mechanical and worn out from recurrent use.

There is insufficient medical furniture important for operating rooms, such as medical cabinets, tables for the instruments, stretchers, etc. There is also an insufficiency of consumables materials and supplies necessary for childbirth care.

The department does not have enough medical equipment and devices necessary to provide adequate birth care, such as: suction machines, ultrasound, fetal heart Doppler, syringe pump, pulse oximeters, defibrillator, blood analyzer, phototherapy lamps, plasma thawing system, ECG with twelve (12) channels etc.

No medical equipment is available for women with special needs (there are no electric delivery tables and gynecological chairs, not enough wheelchairs).



The anesthesia equipment and the equipment for resuscitation of the mother and the newborn are more than 20 years old and outdated.

The institute has an insufficient number of incubators for newborns. Because IMC is the leading institution in the field, and newborns are often transported to the institute in severe adverse conditions from the second level perinatal centers, there is a need for an incubator for transportation.

There are not enough sterilizers, autoclaves, and refrigerators for medicines to meet the current existing needs of the department

IMC's financial capacity is insufficient to be able to procure high-performance equipment from its own funds.

Serious investments were made in recent years in building repairs, but funds were not available for the necessary equipment. International partners through projects provided support to the institute which focused mainly on specialized pediatric care.



In Annex no. 1 of this report, a list of items and equipment are provided of the estimated needs for medical equipment and devices for the mother and child institute to strengthen the institutional technical capacity to provide the necessary medical care to the women in childbirth conditions.

2. The Public Medical Sanitary Institution Municipal Clinical Hospital no.1 "Gheorghe Paladi" , Perinatal Center, Chişinău

General context:



The Center provides delivery support to the largest number of births in the Republic of Moldova attending to around **six thousand and three hundred (6,300) live births** annually. The Perinatological Centre provides neonatal and pediatric services with the capacity of one hundred and five (105) beds with two (2) resuscitation departments for children, including premature services.

The Center provides services to the population of the Chisinau municipality and the adjacent localities (about one million population), as well as receiving births from all over the country. The staff of the Center consists of fifty-five (55) obstetricians-gynecologists, twenty-five (25) neonatologists and twenty (20) professors of the Department of Human Reproduction, Obstetrics and Gynecology of SUMPh "Nicolae Testemitanu". Within the Center there are three (3) gynecology departments in which over one thousand five hundred (1,500) surgeries that are performed annually.



There is the only one septic gynecology department in the country that provides medical assistance at the highest level, solving the most serious postnatal septic-purulent cases as well as septic gynecological diseases from the entire territory of the republic.

Refugees Assistance:

During the assessment period, the Center provides urgent inpatient and consultative medical care to Ukrainian refugees and has so far provided medical care and gynecological consultations for more than forty-five (45) of refugee women; forty (40) pregnant women have asked for antenatal care; 10 Ukrainian refugee women gave birth.

As this hospital is in Chisinau and serves women at municipal, but also at the whole republic levels, in the context of the large influx of refugees from Ukraine we can predict that this medical institution will address a growing number of women, both for gynecological and obstetrical care.

Assessment Findings:

Renovation of the Center took place with the support of the City Hall, which is the founder of the institution, the surgical-obstetric department. Installation of new medical gas and oxygen system and a new ventilation system and the establishment of a woman's reanimation room were completed before the assessment period.

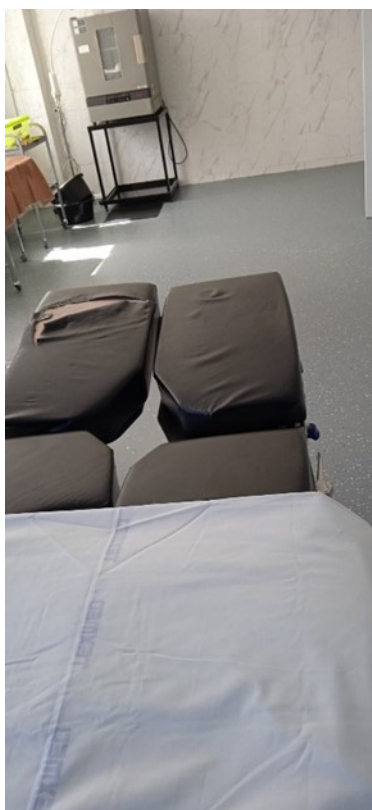


As a result of the reconstruction, the number of operating rooms has been increased from four to six, and additional two delivery rooms were organized.

This decision will increase the institution's capacity to provide medical care to a larger number of women.

The hospital has no financial capacity to be able to procure the necessary equipment and device from its own funds. At the same time, the hospital administration told the assessment team that now the perinatal center is also facing an insufficient supply of certain consumable materials.

The renovation of the department required essential funds, and the distributed amount was not enough to equip the new operation theaters with the necessary equipment.



The new rooms are not equipped with the necessary medical furniture.

There is a lack of a lamp for the additionally created operating rooms, the operating table, the equipment necessary for anesthesia and resuscitation of the mother and newborn is also missing.

The department does not have enough medical equipment and devices necessary to provide adequate birth care in all new created rooms (operation theaters and delivery rooms), such as: ultrasound, blood analyzer, phototherapy lamps, plasma thawing system, ECG with 12 channels, defibrillator etc. It is requested to fully equip these rooms with the vitally necessary equipment.

At the same time, some existing devices and equipment are obsolete and worn out, both morally and physically.

Much of the existing equipment is often out of order and in need of repair.

The estimated needs for medical equipment and devices for the SCM no.1 Perinatal Center are presented in the Annex no. 2 to equip more rooms (operation theater and delivery room) and increase the hospital capacity to provide the necessary medical care to the women in child birth.

3. Public Medical Sanitary Institution Balti Clinical Hospital, Perinatal Center

General context:

The Balti Clinical Hospital is the largest public health institution in the North of the Republic of Moldova with 1861 medical staff working in the institution. The hospital has the capacity of seven hundred and fifty (750) beds of which 75 are in the Perinatal Center. The institution provides medical assistance and referral to the most difficult and critical medical cases in the north region of the country, supplying medical services to about 1.5 million people of Balti municipality and 11 districts from the North region of the country. The Center receives up to 3,000 births per year. Since many maternity hospitals are closed in the rayons of the region because they have less than five hundred (500) births per year (e.g., Briceni, Ocnita), it is expected that the number of women who will give birth at the Balti Perinatal Center will grow.

Refugees Assistance:

In the Northern region of the country there are six (6) border crossing points with Ukraine. Balti is a city where the second spoken language is Russian, and in the northern districts there are localities with Ukrainian ethnicity. This makes the region attractive for Ukrainian refugees.

Since 24th of February 2022, more than 350 refugee persons addressed for medical assistance at Balti Hospital, of whom sixty (60) were women asked for assistance in the perinatal center. During this period, seven refugee women gave birth in the Balti Perinatal center. With the increase in the flow of refugees through the crossing points in the north of the country, the number of visits to the clinical hospital in Balti will also increase, which will require additional effort and capacities.

Assessment Findings:

The current Balti Perinatal Center is in a facility built in the 50's of the last century.

The old building was not repaired for decades and does not meet the existing sanitary-epidemiological standards for perinatal centers.



Currently, the Perinatal Center is planned to be transferred to another building, where the capital reconstruction from public funds is being conducted.

The new location of the center will allow to increase its capacity up to 5,000 births per year and to improve the hospital conditions, adjusted to the international standards for healthcare facilities.

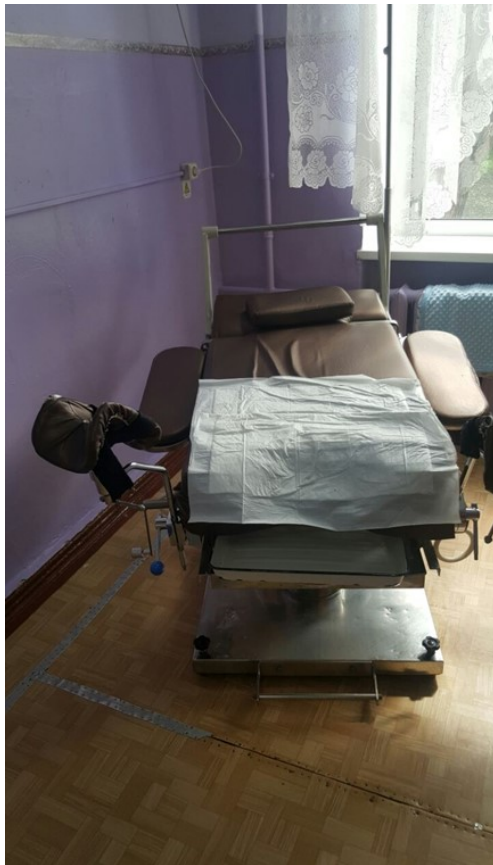
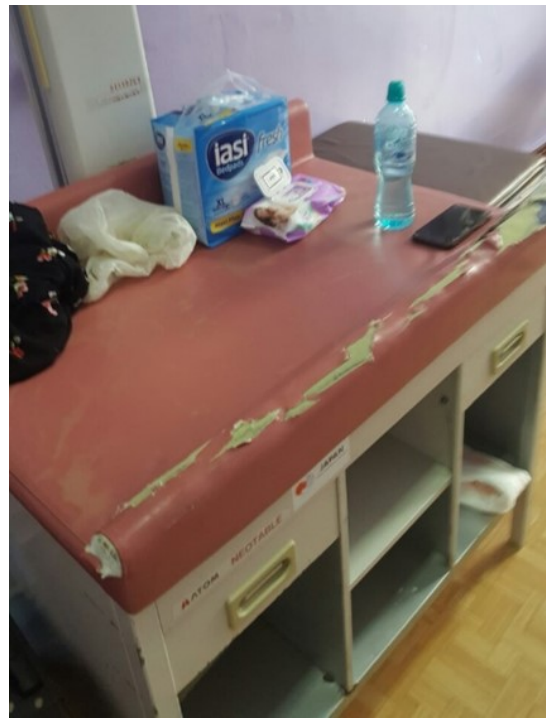
Funds have been allocated from the state budget to reconstruct another building where the Perinatal Center will be transferred.

At the time of the assessment, the repair works were in the finishing stage.

The administration of the institution informed the assessment team that the budget was distributed only for reconstruction, but no sources have been identified yet for the purchase of the necessary equipment and furniture.



The currently existing equipment in the perinatal center are worn out from wear and tear.



Due to the lack of funds for the purchase of new equipment, the hospital administration plans to transfer obsolete equipment and used furniture from the old center to the renovated spaces.

The equipment in the operating and delivery rooms is with a high degree of wear, there is insufficient equipment for anesthesia and the necessary equipment for resuscitating of the mother and the newborn.

At the same time, in the old perinatal center there is a lack of important equipment for adequate and correct care of the woman at birth. It is necessary to equip the center with vitally equipment such as: defibrillator, ultrasound, fetal heart Doppler, ECG, fetal cardio monitor etc.

The center needs essential furniture, both in the medical rooms (medical cabinets, tables for instruments, trolleys for medication, refrigerator for medicines, sterilizers, etc.), as well as the patient rooms (bedside cabinets, chairs, air condition, infant cots etc.).

In the new perinatal center, there are no medical beds for both the patients in the ward and in the intensive care unit.

The existing beds are currently damaged and incredibly old and worn.

The existing delivery tables and gynecological chairs are only mechanical and old, being practically impossible to be used in case of a woman with special needs.

At the same time, the hospital administration told the assessment team that now the perinatal center is also facing an insufficient supply of certain consumable materials.

The hospital has no financial ability to be able to obtain the necessary equipment and device from its own funds and asks for the support.

In the Annex no. 3 is presented the estimated needs for medical equipment and devices for the Balti Perinatal Center to equip the new operation theaters, delivery rooms and Intensive Care area and create the conditions to supply the necessary medical care to women in childbirth.

4. Public Medical Sanitary Institution, Cahul Rayon Hospital, Perinatal Center

General context

According to the regionalization plan, Cahul Hospital is appointed/chosen as a regional hospital for the Southern region of the country. The Perinatological Center is a secondary level medical institution with a capacity of forty (40) beds, including birth profile - 20 beds, pregnancy pathology profile - 10 beds, gynecology profile - 10 beds. There are about 1,300 hospitalizations and about **one thousand (1,000) live births** annually. The center offers perinatal services to women from Cahul district, partially the population from Vulcanesti and Taraclia districts, over 160 thousand population.

The center has been renovated recently within a project financed by some international partners. Currently the second floor is in renovation process, where it is planned to create an added operating room, which will increase the Centre's capacity to provide the necessary medical care.

Refugees Assistance:

Since 24th of February 2022, seven refugee women have addressed to the perinatal center for specialized medical care, two women gave birth.

Cahul is one of the largest cities in the south of the country, so the number of refugees in this locality is expected to increase with the increase in the flow of refugees from Ukraine.

As the center currently has only one operating room, the center's administration wants to equip an additional operating theater to increase the technical capacity of the institution to assist women in childbirth, including those among refugees.

Assessment Findings:

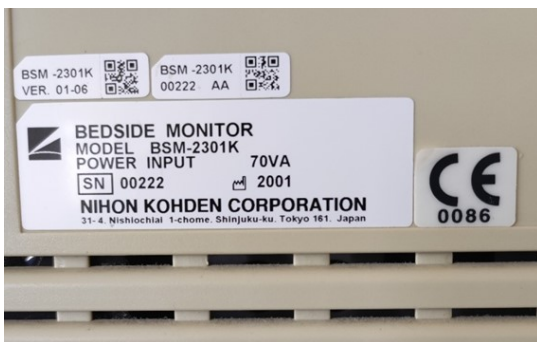


The hospital has no financial ability to be able to procure the necessary equipment and device from its own funds to equip additional operation theater and delivery rooms.

At the same time, the equipment currently used in the center is outdated and worn.

There is an acute lack or insufficiency of the vital equipment necessary to support the women at delivery/birth and the newborns such as: defibrillator, ultrasound, fetal heart Doppler, ECG, cardio monitor etc.

Even though the building has been repaired, some of the furniture in the medical offices and in the center's, wards is very worn and old and needs to be replaced.



Many of the existing equipment and devices are over 20 years old.

Due to the high degree of wear, a lot of equipment often breaks down, goes out of order, and needs repair.



This also refers to the vital equipment for providing emergency and intensive care to the woman at birth and the newborn.



The existing delivery tables and gynecological chairs are only mechanical and date back to more than 30 years of wear, being impossible to be used in case of a woman with special needs.



There is a lack of important medical furniture for the operating rooms (for storing medicines, instruments, and consumables).

There is no refrigerator for storing medicines.

The building is not equipped with a centralized gas supply system, which is provided by oxygen balloons. Due to the low pressure, the anesthesia machine does not work properly.

The institution does not have the necessary compressors to increase the oxygen pressure.

The operating rooms are insufficiently equipped. The operating tables are old and mechanical, without the possibility of being adjusted according to specific situations of the patients.

At the same time, the hospital administration told the assessment team that now, the perinatal center is also facing an insufficient supply of certain consumable materials.

The hospital has no financial capacity to be able to procure the necessary equipment and device from its own funds and asks for the support.

In Annex no. 4 of the report provides the estimated needs for medical equipment and devices for the Cahul Perinatal Center to equip one additional operation theater, the existing delivery rooms and Intensive Care area and create the conditions to provide the necessary medical care to the woman in childbirth.

At the same time, the hospital administration told us that now the perinatal center is also facing an insufficient supply of certain consumable materials.



5. Public Medical Sanitary Institution, Edineț Rayon Hospital, Perinatal Center

General context:

The Perinatal Center within the Edineț Hospital offers SRH services for the population from 3 districts - Edineț, Briceni and Ocnîța. The center has forty (40) beds, of which: in maternity ward - 20 beds; in pathology of pregnancy - 10 beds and 10 beds in the gynecology ward. The Center provides delivery support to **one thousand and two hundred (1,200) live births** annually.

The center has been renovated recently from the budget provided by the local authority. Due to the increased flow of pregnant women, including refugees, the Centre's administration said that the need to equip and open another operating room had already been found. However, due to a limited fund, the institution cannot afford such expenses from its own funds.

In 2018, the Center received a \$60,504 grant from the Government of Japan, of which some important equipment for the intensive care of the newborn was bought. However, now, a lot of used and outdated equipment is still being found, especially related to providing support of the women at birth.

Refugees Assistance:

In the Briceni and Ocnita districts there are quite few border crossing points with Ukraine, through which there has been a large influx of refugees since the start of the war in Ukraine. It is important to note that there are ethnic Ukrainian communities living and existing in these northern districts, where high number of refugees are hosted. Thus, the number of refugees in this region is higher, which means a higher demand by them for health services, including to address SRH needs.

Assessment Findings:

The center needs the necessary equipment to equip another added delivery room.



Surgery tables, birth tables and gynecological chairs are incredibly old and worn, all are mechanical and do not provide adequate support conditions to be used for women with special needs.



The current equipment used at birth is outdated and not functional.

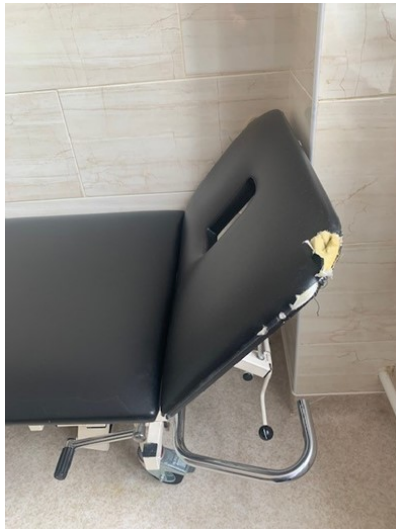
A large part of the equipment intended for the intensive care of pregnant women and newborns is obsolete, worn and dated to the age of over 20 years.

At the same time, the hospital administration told us that now the perinatal center is also facing an insufficient supply of certain consumable materials.

The hospital has no financial capacity to be able to procure the necessary equipment and device from its own funds and asks for the support.



In Annex no. 5 of the report provides a list of the estimated needs for medical equipment and devices for the Edineț Perinatal Center to support and equip one additional operation theater, the existing delivery rooms and Intensive Care area and create the adequate conditions to provide the necessary medical care to the women in childbirth.



6. Public Medical Sanitary Institution, Ceadir Lunga Rayon Hospital, Perinatal Center

General context

The Level II Perinatal Center within Ceadir Lunga Hospital provides SRH services for the population of Ceadir Lunga district, Taraclia district and part of Comrat district. The center has **twenty-two (22) beds**.

About seven hundred (700) live births take place in the Center every year. The gynecology and pregnancy pathology department has nine (9) beds. There are two (2) full-time obstetricians and four (4) part-time obstetricians in the Center and two (2) neonatologists.

The center is in a building built in the 90's. During the last 30 years no major investments have been made in this institution, the equipment and the building being in a deplorable condition. This year, the capital repair activities of the Perinatal Center were started.

Refugees Assistance:

Ceadir Lunga rayon/region is in the border region of Ukraine. The border crossing is close. Ceadir Lunga is a district of the Gagauzia Autonomous Territorial Unit, where the most often spoken language is Russian. Thus, for many refugees from Ukraine this region is attractive, as there are no communication barriers. Many refugees from Ukraine have relatives in this district and the number of



refugees placed in the community is high. Respectively, the demand for health care from refugees may be increasing due to location with the border crossing.

Assessment Findings:

Ceadir Lunga Perinatal Center needs full equipment. Absolutely all the equipment and furniture are outdated, worn and much damaged. All the images attached to this text are made in the operating room, where evidence can be seen of the lack of sanitary conditions, the lack of adequate light, the poor and worn-out equipment and medical furniture.

The center does not have the necessary equipment for the intensive care of the woman at birth and the newborn.

The local public authority has started the capital reconstruction of the perinatological center. At the time of assessment team visit, the reconstruction work was in progress.

However, the distributed/allocated budget is strictly directed for the repair works of the building.

No public funds were found for the procurement of vital equipment important for the necessary care of the woman at birth and the intensive care of the newborn.



The hospital's budget cannot cover such expenses.

The hospital is also facing a shortage of some medicines and consumables.

The estimated needs for medical equipment and devices for the Ceadir Lunga Perinatal Center to equip one more operation theater, the existing delivery rooms and Intensive Care area are presented in the Annex no.6.



7. Public Medical Sanitary Institution Comrat Rayon Hospital, Perinatal Center

General context

The Level I Perinatal Center within Comrat Hospital provides SRH services for the population of Comrat district and part of Taraclia district, to a population of over 80 thousand inhabitants. The maternity ward has a capacity of 14 beds. The ward has 1 operational room and one delivery room. About 500 births are assisted annually in the institution, about 15% of them are by cesarean section. Maternity is fully provided with gynecologists and neonatologists, as needed.

The institution received essential support in a project funded by the Government of Turkey, the building was renovated and the necessary equipment was partially procured.

Refugees Assistance:

As the population of Comrat district is predominantly Russian-speaking, this region is attractive to Ukrainian refugees. Many people in the local community hosted refugees.

With the increase in the number of refugees in Ukraine, there has been an increase in requests from refugee women placed in the community for antenatal and childbirth services.

Assessment Findings:

In discussion with the administration of the institution, the support from UNFPA was requested in order to strengthen the technical capacities of the hospital in the field of resuscitation of the newborn.

Doctors have acknowledged that due to lack of necessary equipment, there are cases when it is difficult for them to provide adequate care to save the newborn





at birth (newborn resuscitation table, fetal cardio monitor, laryngoscope for newborn, resuscitator hand operating for neonate etc.).

A separate request was for the purchase of a compressor for the anesthesia machine, which was offered as part of a project but without a compressor. Thus, the anesthesia machine cannot be used in patient care.

The list of the requested and needed equipment is presented and can be found in the Annex no. 7.

8. Public Medical Sanitary Institution, Clinical Municipal Hospital no.3 “Sf. Treime”

General context:

The hospital provides multi-disciplinary care, being considered one of the strategic hospitals for emergencies, taking into account the siege. The Hospital has fulfilled a great work during the COVID-19 pandemic by managing the COVID-19 Moldexpo Triage Center.

The hospital provides assistance to the population of Chisinau municipality and the adjacent territories, but is also a point of reference for several important fields at the national level (eg toxicology). In the hospital, the emergency unit is permanently active for 16 profiles.

The hospital has a Gynecology department with a capacity of 30 beds where women with complex problems are hospitalized, requiring multi-profile care and complex surgery, with the involvement of several specialists in the same time (eg urologists, general surgeons, nephrologists, cardiologist etc.). Every year, more than 1,400 patients receive specialized care in this department. The patients of this department benefit from a wide range of state-of-art interventions as endoscopy, laparoscopy diagnostic services, including the unique treatment of uterine fibroids using the embolization method.

During the last year, the number of treated cases increased by 40%, while the surgical activity was about 95% (more than 73% were emergencies). The medical team of the department consists of 8 highly qualified gynecologists, including 2 PhD doctors.

The department is a basis for the medical education, both for graduate and postgraduate levels.

Refugees Assistance:

Because the hospital provides multi-disciplinary care, even in the first weeks of the war in Ukraine, frequent address has been recorded from refugee women with various complex health problems, associated with those related to sexual and reproductive health. Thus, in the first months of the war more than two hundred (200) of gynecological emergencies were registered and assisted and more than thirty (30) refugee women were hospitalized with gynecologic

pathologies combined with other health problems (urology, general surgery, trauma etc.).

Assessment Findings:

The hospital is facing an insufficiency of operating rooms, being a permanent overload of them from many surgical departments. At the moment there is a lack of an operating room specially arranged and dedicated to gynecological interventions, as it is recommended by the modern standards. The gynecological



interventions are performed in a general operating theater being usually in very high demand and busy overworking by other surgical departments (10 surgical with different disciplines) of the hospital. Therefore, it is important to create a dedicated operating theater for gynecological and obstetrical interventions.

The assessment team identified the essential need to develop an additional operating room specially dedicated to gynecological interventions for situations of complex pathologies and cases. The hospital has initiated repair and reconstruction work to create space for an additional operating room, but does not have sufficient financial capacity to procure the necessary specialized equipment.

The equipment list is described in Annex 8.

9. Public Medical Sanitary Institution, Institute of Oncology

General context:

The Oncology Institute is the only institution dedicated to organizing the detection and treatment of oncological diseases. The institute has 3 departments dedicated to the field of women's health - Gynecological radiology, Oncological gynecology and Mammology. The hospital currently has 13 gynecologists and 12 oncologists mammologists. More than 2800 women are hospitalized for various gynecological treatments, mostly surgical. During a year about 12,300 surgeries are performed in the institution, of which over 2000 in the field of gynecology and about 2000 in mammology.

Refugees Assistance:

Since the onset of the humanitarian crisis with the arrival of a large influx of refugees from Ukraine, women with various emergencies and gynecological problems have been visiting the Oncology Institute almost daily. In particular, women who were being monitored or registered with an oncologist / gynecologist in Ukraine were referred for assistance. 3 emergency surgeries were performed on Ukrainian citizens.

At the time of our assessment, more than 50 women received the necessary care and 3 emergency surgeries were performed on Ukrainian patients.

Assessment Findings:

The hospital has only one operating room dedicated to gynecological interventions. For this reason, the waiting list of patients to be taken to planned interventions can reach up to 2 months, which can lead to a risk of worsening women's health.

At the same time, the waiting time is high even for operating rooms for general surgery (for some fields it can even reach 3 months).

The assessment team identified the need for an additional operating room for gynecological interventions in order to increase women's access to the necessary

surgical care, including those of Ukrainian refugees. The financial capacity of the hospital at the moment is very modest and does not allow the creation of an additional operating room.

At the same time, the assessment team noticed a high degree of wear of the existing equipment in the operating rooms currently active.

The list of equipment necessary for the endowment of an additional operating room dedicated to surgical interventions is described in the Annex no. 9.

ANNEX no.1**MEDICAL SUPPLIES, EQUIPMENT AND FURNITURE FOR INSTITUTE OF MOTHER AND CHILD**

	Item	No. units
1.	Operating light ceiling type with 2 satellites	4
2.	Examination mobile lamp	7
3.	Electrically Operated Operating table with 5 sections	5
4.	Anesthesia machine (with gas analyzer)	4
5.	Bedside patient monitor with trolley	10
6.	Fetal cardio monitor with trolley (CTG)	7
7.	Sphygmomanometer trolley type	5
8.	Adult-pediatric pulmonary ventilator	3
9.	COOL-CAP system for therapeutic hypothermia	1
10.	Neonatal Children Adults Cardiac Monitor for hospital	4
11.	CPAP neonatal ventilator	8
12.	Pulmonary ventilator for newborn	2
13.	Electrosurgical unit	4
14.	Newborn resuscitation table	14
15.	Portable ultrasound	1
16.	Suction machine 1.5 - 2 liters capacity, electric, with infant and adult tubes	10
17.	Functional patient resuscitation trolley/gurney (hydraulic stretcher trolley, with infusion stand, monitor holder, suction machine holder)	1
18.	Tracheobronchial aspiration system with closed circuit (closed suction system for hospital)	5
19.	Suction machine for newborn	6
20.	Defibrillator (Emergency resuscitation trolley with defibrillator)	3
21.	Newborn pulse oximeter	6
22.	Syringe pump	27
23.	Syringe pump with 4 units	10
24.	Laryngoscope with set of adult blades (Macintosh)	5
25.	Laryngoscope for newborn	5
26.	DVT compression pump (Intermittent pneumatic compression device)	1
27.	Stretcher, patient, with side rails	5
28.	Trolley Emergency with drawers	8
29.	Worktable stainless	8
30.	Table instrument stainless steel 2 trays	8
31.	Revolving Stool	5
32.	Medical cabinet instruments with double door glass	7
33.	Medical cabinet instruments with double door close	3
34.	Hot Air Sterilizer (70 Liter capacity)	3
35.	IV stands	5
36.	Electronic weighting scales for newborn	10
37.	Weighting scale for adult	3
38.	Bili (bilirubin) light meter for newborn	1
39.	Fetal Heart Doppler	1
40.	Blood gas analyzation ABL for newborn	1
41.	Phototherapy lamps	15

42.	Vein detector	1
43.	Foot stool two steps	3
44.	ICU bed	2
45.	Incubator for transportation	1
46.	Incubator	10
47.	Cusco's Speculum Large size	10
48.	Cusco's Speculum Medium size	10
49.	Cusco's Speculum small size	10
50.	Labor / delivery/treatment table (electrically operated)	7
51.	Thermo scanner	5
52.	ECG with 12 channels	1
53.	Plasma thawing system	1
54.	Wheelchair	1
55.	Bedside cabinet	2
56.	Overbed table	10
57.	Infant changing table	10
58.	Bed screen hospital on castors	10
59.	Pharmacy refrigerator LABCOLD 36 l 540 mm x450 mm x510 mm	1
60.	Refrigerator (200 L capacity)	1
61.	LCD Television unit (42 Inch)	1
62.	LCD Television unit (55 Inch)	1
63.	Newborn bathtub	1
64.	Mature electric blanket	1
65.	Small oxygen portable cylinder 5 liter	2
66.	Endotracheal tubes (adult and newborn) size 2.5-3 (neonatal) 7 and 7.5 (adult) - 50 (New-Born) and 50 for (Adult)	100
67.	Resuscitator, hand operating, neonate, set	2
68.	Water Dispenser	2
69.	Shoe Cover machine (automatic)	2
70.	Table, instruments, Mayo type, stainless steel, on castors	8
71.	Air Condition (18 L capacity)	7

ANNEX no.2**MEDICAL SUPPLIES, EQUIPMENT AND FURNITURE FOR MUNICIPAL CLINICAL HOSPITAL No.1
CHIȘINAU**

1.	Item	No. units
2.	Operating light ceiling type with 2 satellites	2
3.	Examination mobile lamp	2
4.	Electrically Operated Operating table with 5 sections	2
5.	Anesthesia machine (with gas analyzer)	1
6.	Bedside patient monitor with trolley	4
7.	Fetal cardio monitor with trolley (CTG)	2
8.	Sphygmomanometer trolley type	5
9.	Adult-pediatric pulmonary ventilator	1
10.	Neonatal Children Adults Cardiac Monitor for hospital	4
11.	CPAP neonatal ventilator	4
12.	Pulmonary ventilator for newborn	2
13.	Electrosurgical unit	1
14.	Newborn resuscitation table	5
15.	Portable ultrasound	1
16.	Suction machine 1.5 - 2 liters capacity, electric, with infant and adult tubes	4
17.	Suction machine for newborn	4
18.	Defibrillator (Emergency resuscitation trolley with defibrillator)	2
19.	Newborn pulse oximeter	4
20.	Syringe pump	8
21.	Laryngoscope with set of adult blades (Macintosh)	1
22.	Laryngoscope for newborn	2
23.	Stretcher, patient, with side rails	2
24.	Trolley Emergency with drawers	3
25.	Worktable stainless	3
26.	Table instrument stainless steel 2 trays	3
27.	Revolving Stool	3
28.	Medical cabinet instruments with double door glass	5
29.	Medical cabinet instruments with double door close	3
30.	Hot Air Sterilizer (70 Liter capacity)	1
31.	IV stands	5
32.	Electronic weighting scales for newborn	5
33.	Weighting scale for adult	2
34.	Bili (bilirubin) light meter for newborn	1
35.	Fetal Heart Doppler	1
36.	Blood gas analyzation ABL for newborn	1
37.	Phototherapy lamps	5
38.	Vein detector	1
39.	Foot stool two steps	3
40.	ICU bed	2
41.	Incubator	2
42.	Cusco's Speculum Large size	10
43.	Cusco's Speculum Medium size	10

44.	Cusco's Speculum small size	10
45.	Labor / delivery/treatment table (electrically operated)	1
46.	Thermo scanner	5
47.	ECG with 12 channels	1
48.	Plasma thawing system	1
49.	Wheelchair	1
50.	Bedside cabinet	2
51.	Overbed table	5
52.	Infant changing table	10
53.	Bed screen hospital on castors	5
54.	Pharmacy refrigerator LABCOLD 36 l 540 mm x450 mm x510 mm	1
55.	Refrigerator (200 L capacity)	1
56.	LCD Television unit(42 Inch)	1
57.	Newborn bathtub	1
58.	Mature electric blanket	2
59.	Small oxygen portable cylinder5 liter	2
60.	Endotracheal tubes (adult and newborn) size 2.5-3 (neonatal) 7 and7.5 (adult)) - 50 (New-Born) and 50 for (Adult)	100
61.	Resuscitator, hand operating, neonate, set	2
62.	Water Dispenser	2
63.	Shoe Cover machine (automatic)	2
64.	Table, instruments, Mayo type, stainless steel, on castors	3
65.	Air Condition (18 L capacity)	2

ANNEX no.3**MEDICAL SUPPLIES, EQUIPMENT AND FURNITURE FOR BALTI CLINICAL HOSPITAL**

	Item	units
1.	Operating light ceiling type with 2 satellites	3
2.	Examination mobile lamp	7
3.	Electrically Operated Operating table with 5 sections	3
4.	Anesthesia machine (with gas analyzer -)	2
5.	Bedside patient monitor with trolley	10
6.	Fetal cardio monitor with trolley (CTG)	4
7.	Sphygmomanometer trolley type	5
8.	Adult-pediatric pulmonary ventilator	2
9.	Neonatal Children Adults Cardiac Monitor for hospital	4
10.	CPAP neonatal ventilator	5
11.	Pulmonary ventilator for newborn	2
12.	Electrosurgical unit	2
13.	Newborn resuscitation table	7
14.	Portable ultrasound	2
15.	Suction machine 1.5 - 2 liters capacity, electric, with infant and adult tubes	4
16.	Functional patient resuscitation trolley/gurney (hydraulic stretcher trolley, with infusion stand, monitor holder, suction machine holder)	1
17.	Suction machine for newborn	6
18.	Defibrillator (Emergency resuscitation trolley with defibrillator)	2
19.	Newborn pulse oximeter	6
20.	Syringe pump	21
21.	Laryngoscope with set of adult blades (Macintosh)	3
22.	Laryngoscope for newborn	2
23.	Stretcher, patient, with side rails	6
24.	Trolley Emergency with drawers	9
25.	Worktable stainless	5
26.	Table instrument stainless steel 2 trays	5
27.	Revolving Stool	5
28.	Medical cabinet instruments with double door glass	10
29.	Medical cabinet instruments with double door close	3
30.	Hot Air Sterilizer (70 Liter capacity)	3
31.	Horizontal Autoclave Steam Sterilizer capacity 90L	1
32.	Hand Washing Basin for operating theatre (foot operated)	2
33.	IV stands	20
34.	Electronic weighting scales for newborn	6
35.	Weighting scale for adult	3
36.	Bili (bilirubin) light meter for newborn	1
37.	Fetal Heart Doppler	2
38.	Blood gas analyzation ABL for newborn	1
39.	Phototherapy lamps	8
40.	Vein detector	1
41.	Foot stool two steps	2
42.	ICU bed	5
43.	Incubator	6

44.	Cusco's Speculum Large size	10
45.	Cusco's Speculum Medium size	10
46.	Cusco's Speculum small size	10
47.	Labor / delivery/treatment table (electrically operated)	4
48.	Gynecological examination table	4
49.	Thermo scanner	5
50.	ECG with 12 channels	1
51.	Plasma thawing system	1
52.	Wheelchair	4
53.	Patient bed 2 section	62
54.	Examination couch	6
55.	Bedside cabinet	67
56.	Overbed table	12
57.	Infant cot	64
58.	Infant changing table	25
59.	Bed screen hospital on castors	8
60.	Chairs (office use washable)	117
61.	Locker nr.2	4
62.	Office Desk	9
63.	Pharmacy refrigerator LABCOLD 36 l 540 mm x450 mm x510 mm	1
64.	Refrigerator (200 L capacity)	1
65.	Wardrobe (Non-Metal)	25
66.	Air Condition (18 L capacity)	10
67.	LCD Television unit(42 Inch)	2
68.	Newborn bathtub	1
69.	Mature electric blanket	1
70.	Small oxygen portable cylinder5 liter	2
71.	Endotracheal tubes (adult and newborn) size 2.5-3 (neonatal) 7 and7.5 (adult)) - 50 (New-Born) and 50 for (Adult)	100
72.	Resuscitator, hand operating, neonate, set	2
73.	Water Dispenser	2
74.	Shoe Cover machine (automatic)	2
75.	Table, instruments, Mayo type, stainless steel, on castors	9

ANNEX no.4

MEDICAL SUPPLIES, EQUIPMENT AND FURNITURE FOR CAHUL PERINATAL CENTER

1.	Item	
2.	Operating light ceiling type with 2 satellites	1
3.	Examination mobile lamp	5
4.	Electrically Operated Operating table with 5 sections	1
5.	Anesthesia machine (with gas analyzer)	1
6.	Bedside patient monitor with trolley	3
7.	Fetal cardio monitor with trolley (CTG)	2
8.	Sphygmomanometer trolley type	3
9.	Adult-pediatric pulmonary ventilator	1
10.	Neonatal Children Adults Cardiac Monitor for hospital	2
11.	CPAP neonatal ventilator	1
12.	Pulmonary ventilator for newborn	1
13.	Compressor for anesthesia machine and CPAP ventilator	3
14.	Electrosurgical unit	1
15.	Newborn resuscitation table	3
16.	Portable ultrasound	1
17.	Suction machine 1.5 - 2 liters capacity, electric, with infant and adult tubes	2
18.	Suction machine for newborn	3
19.	Defibrillator (Emergency resuscitation trolley with defibrillator)	2
20.	Newborn pulse oximeter	2
21.	Syringe pump	5
22.	Laryngoscope with set of adult blades (Macintosh)	2
23.	Laryngoscope for newborn	1
24.	Stretcher, patient, with side rails	2
25.	Trolley Emergency with drawers	3
26.	Worktable stainless	3
27.	Table instrument stainless steel 2 trays	3
28.	Revolving Stool	2
29.	Medical cabinet instruments with double door glass	6
30.	Medical cabinet instruments with double door close	3
31.	Hot Air Sterilizer (70 Liter capacity)	2
32.	Horizontal Autoclave Steam Sterilizer capacity 90L	1
33.	IV stands	5
34.	Electronic weighting scales for newborn	8
35.	Weighting scale for adult	2
36.	Bili (bilirubin) light meter for newborn	1
37.	Fetal Heart Doppler	3
38.	Blood gas analyzation ABL for newborn	1
39.	Phototherapy lamps	5
40.	Vein detector	1
41.	Foot stool two steps	2
42.	ICU bed	2
43.	Cusco's Speculum Large size	10
44.	Cusco's Speculum Medium size	10

45.	Cusco's Speculum small size	10
46.	Labor / delivery/treatment table (electrically operated)	5
47.	Gynecological examination table	3
48.	Thermo scanner	5
49.	ECG with 12 channels	1
50.	Plasma thawing system	1
51.	Wheelchair	3
52.	Patient bed 2 section	2
53.	Examination couch	3
54.	Bedside cabinet	4
55.	Overbed table	5
56.	Infant cot	10
57.	Infant changing table	5
58.	Bed screen hospital on castors	5
59.	Pharmacy refrigerator LABCOLD 36 l 540 mm x450 mm x510 mm	1
60.	Refrigerator (200 L capacity)	1
61.	LCD Television unit(42 Inch)	2
62.	Portable oxygen cylinder (Type H- M250)	4
63.	Pressure regulator (rotameter)	4
64.	Humidifier	4
65.	Mature electric blanket	1
66.	Small oxygen portable cylinder5 liter	2
67.	Endotracheal tubes (adult and newborn) size 2.5-3 (neonatal) 7 and7.5 (adult)) - 50 (New-Born) and 50 for (Adult)	100
68.	Resuscitator, hand operating, neonate, set	2
69.	Water Dispenser	2
70.	Shoe Cover machine (automatic)	2
71.	Table, instruments, Mayo type, stainless steel, on castors	4

ANNEX no.5**MEDICAL SUPPLIES AND EQUIPMENT FOR PERINATAL CENTRE OF EDINET HOSPITAL**

1.	Item	units
2.	Operating light ceiling type with 2 satellites	1
3.	Examination mobile lamp	1
4.	Electrically Operated Operating table with 5 sections	1
5.	Anesthesia machine (with gas analyzers)	1
6.	Bedside patient monitor with trolley	2
7.	Fetal cardio monitor with trolley (CTG)	1
8.	Sphygmomanometer trolley type	2
9.	Adult-pediatric pulmonary ventilator	1
10.	Neonatal Children Adults Cardiac Monitor for hospital	1
11.	CPAP neonatal ventilator	1
12.	Pulmonary ventilator for newborn	1
13.	Electrosurgical unit	1
14.	Newborn resuscitation table	2
15.	Portable ultrasound	1
16.	Suction machine 1.5 - 2 liters capacity, electric, with infant and adult tubes	1
17.	Suction machine for newborn	1
18.	Defibrillator (Emergency resuscitation trolley with defibrillator)	1
19.	Newborn pulse oximeter	1
20.	Syringe pump	2
21.	Laryngoscope with set of adult blades (Macintosh)	2
22.	Laryngoscope for newborn	1
23.	Stretcher, patient, with side rails	2
24.	Trolley Emergency with drawers	1
25.	Worktable stainless	1
26.	Table instrument stainless steel 2 trays	2
27.	Revolving Stool	1
28.	Medical cabinet instruments with double door glass	1
29.	Medical cabinet instruments with double door close	1
30.	Hot Air Sterilizer (70 Liter capacity)	1
31.	IV stands	5
32.	Electronic weighting scales for newborn	2
33.	Weighting scale for adult	2
34.	Bili (bilirubin) light meter for newborn	1
35.	Fetal Heart Doppler	2
36.	Blood gas analyzation ABL for newborn	1
37.	Phototherapy lamps	2
38.	Vein detector	1
39.	Foot stool two steps	1
40.	ICU bed	2
41.	Cusco's Speculum Large size	10
42.	Cusco's Speculum Medium size	10
43.	Cusco's Speculum small size	10
44.	labor / delivery/treatment table (electrically operated)	1
45.	Gynecological examination table	1

46.	Thermo scanner	5
47.	ECG with 12 channels	1
48.	Plasma thawing system	1
49.	Wheelchair	1
50.	Patient bed 2 section	2
51.	Examination couch	1
52.	Bedside cabinet	4
53.	Overbed table	4
54.	Bed screen hospital on castors	5
55.	Pharmacy refrigerator LABCOLD 36 l 540 mm x450 mm x510 mm	1
56.	Refrigerator (200 L capacity)	1
57.	LCD Television unit(42 Inch)	1
58.	Mature electric blanket	1
59.	Small oxygen portable cylinder5 liter	2
60.	Endotracheal tubes (adult and newborn) size 2.5-3 (neonatal) 7 and7.5 (adult)) - 50 (New-Born) and 50 for (Adult)	100
61.	Resuscitator, hand operating, neonate, set	2
62.	Water Dispenser	2
63.	Shoe Cover machine (automatic)	2
64.	Table, instruments, Mayo type, stainless steel, on castors	2

ANNEX no.6**MEDICAL SUPPLIES, EQUIPMENT AND FURNITURE FOR CEADIR LUNGA PERINATAL CENTER**

1.	Item	units
2.	Operating light ceiling type with 2 satellites	1
3.	Examination mobile lamp	4
4.	Electrically Operated Operating table with 5 sections	1
5.	Anesthesia machine (with gas analyzer)	1
6.	Bedside patient monitor with trolley	3
7.	Fetal cardio monitor with trolley (CTG)	2
8.	Sphygmomanometer trolley type	4
9.	Adult-pediatric pulmonary ventilator	1
10.	Neonatal Children Adults Cardiac Monitor for hospital	2
11.	CPAP neonatal ventilator	1
12.	Pulmonary ventilator for newborn	1
13.	Compressor for anesthesia machine and CPAP ventilator	2
14.	Electrosurgical unit	1
15.	Newborn resuscitation table	3
16.	Portable ultrasound	1
17.	Suction machine 1.5 - 2 liters capacity, electric, with infant and adult tubes	2
18.	Functional patient resuscitation trolley/gurney (hydraulic stretcher trolley, with infusion stand, monitor holder, suction machine holder)	1
19.	Suction machine for newborn	3
20.	Defibrillator (Emergency resuscitation trolley with defibrillator)	2
21.	Newborn pulse oximeter	2
22.	Syringe pump	5
23.	Laryngoscope with set of adult blades (Macintosh)	2
24.	Laryngoscope for newborn	1
25.	Stretcher, patient, with side rails	3
26.	Trolley Emergency with drawers	4
27.	Worktable stainless	4
28.	Table instrument stainless steel 2 trays	4
29.	Revolving Stool	4
30.	Medical cabinet instruments with double door glass	5
31.	Medical cabinet instruments with double door close	5
32.	Hot Air Sterilizer (70 Liter capacity)	2
33.	Hand Washing Basin for operating theatre (foot operated)	1
34.	IV stands	10
35.	Electronic weighting scales for newborn	6
36.	Weighting scale for adult	4
37.	Bili (bilirubin) light meter for newborn	1
38.	Fetal Heart Doppler	2
39.	Blood gas analyzation ABL for newborn	1
40.	Phototherapy lamps	3
41.	Vein detector	1
42.	Foot stool two steps	1
43.	ICU bed	2
44.	Incubator	3

45.	Cusco's Speculum Large size	10
46.	Cusco's Speculum Medium size	10
47.	Cusco's Speculum small size	10
48.	Labor / delivery/treatment table (electrically operated)	4
49.	Gynecological examination table	3
50.	Thermo scanner	5
51.	ECG with 12 channels	1
52.	Plasma thawing system	1
53.	Wheelchair	2
54.	Patient bed 2 section	15
55.	Examination couch	2
56.	Bedside cabinet	17
57.	Overbed table	4
58.	Infant cot	15
59.	Infant changing table	10
60.	Bed screen hospital on castors	10
61.	Chairs (office use washable)	25
62.	Locker nr.2	4
63.	Office Desk	4
64.	Pharmacy refrigerator LABCOLD 36 l capacity, 540 mm x450 mm x510 mm	1
65.	Refrigerator (200 L capacity)	1
66.	Wardrobe (Non-Metal)	10
67.	Air Condition (18 L capacity)	10
68.	LCD Television unit(42 Inch)	2
69.	Newborn bathtub	1
70.	Portable oxygen cylinder (Type H- M250)	4
71.	Pressure regulator (rotameter)	4
72.	Humidifier	4
73.	Mature electric blanket	1
74.	Small oxygen portable cylinder5 liter	2
75.	Endotracheal tubes (adult and newborn) size 2.5-3 (neonatal) 7 and7.5 (adult)) - 50 (New-Born) and 50 for (Adult)	100
76.	Resuscitator, hand operating, neonate, set	2
77.	Water Dispenser	2
78.	Shoe Cover machine (automatic)	2
79.	Table, instruments, Mayo type, stainless steel, on castors	4

ANNEX No.7**MEDICAL SUPPLIES AND EQUIPMENT FOR COMRAT MATERNITY HOSPITAL**

	Item	units
1.	Fetal cardio monitor with trolley (CTG)	1
2.	Compressor for anesthesia machine and CPAP ventilator	1
3.	Newborn resuscitation table	1
4.	Newborn pulse oximeter	1
5.	Laryngoscope for newborn	1
6.	Plasma thawing system	1
7.	Pharmacy refrigerator LABCOLD 36 l 540 mm x450 mm x510 mm	1
8.	Small oxygen portable cylinder 5 liter	2
9.	Endotracheal tubes (adult and newborn) size 2.5-3 (neonatal) 7 and7.5 (adult)) - 50 (New-Born) and 50 for (Adult)	100
10.	Resuscitator, hand operating, neonate, set	2
11.	Water Dispenser	1
12.	Shoe Cover machine (automatic)	2

ANNEX No.8

MEDICAL SUPPLIES AND EQUIPMENT MUNICIPAL CLINICAL HOSPITAL NR.3 "SF. TREIME"

1	Operating light ceiling type with 2 satellites	1
2	Examination mobile lamp	1
3	Electrically Operated Operating table with 5 sections	1
4	Anesthesia machine (with gas analisator)	1
5	Bedside patient monitor with trolley	1
6	Sphygmomanometer trolley type	1
7	Electrosurgical unit	1
8	Suction machine 1.5 - 2 liters capacity, electric, with infant and adult tubes	1
9	Functional patient resuscitation trolley/gurney (hydraulic stretcher trolley, with infusion stand, monitor holder, with suction machine holder)	1
10	Laryngoscope with set of adult blades (Macintosh)	1
11	Stretcher, patient, with side rails	1
12	Trolley Emergency with drawers	1
13	Table instrument stainless steel 2 trays	1
14	Table, instruments, Mayo type, stainless steel, on castors	
15	Pharmacy refrigerator LABCOLD 36 l 540 mm x450 mm x510 mm	1
16	Plasma thawing system	1
17	Defibrillator (Emergency resuscitation trolley with defibrillator)	1
18	Worktable stainless	1
19	Revolving Stool	1
20	Foot stool two steps	1
21	Medical cabinet instruments with double door glass	1
22	Hot Air Sterilizer (70 Liter capacity)	1
23	Portable ultrasound	1
24	Air Condition (24 L capacity)	1

ANNEX No.9

MEDICAL SUPPLIES AND EQUIPMENT ONCOLOGY INSTITUTE

#	Item	units
1.	Examination mobile lamp	2
2.	Electrically Operated Operating table with 5 sections	1
3.	Anesthesia machine (with gas analyzer)	1
4.	Bedside patient monitor with trolley	1
5.	Sphygmomanometer trolley type	1
6.	Adult-pediatric pulmonary ventilator	1
7.	Electrosurgical unit	1
8.	Portable ultrasound	1
9.	Suction machine 1.5 - 2 liters capacity, electric, with infant and adult tubes	1
10.	Functional patient resuscitation trolley/gurney (hydraulic stretcher trolley, with infusion stand, monitor holder, suction machine holder)	2
11.	Tracheobronchial aspiration system with closed circuit (closed suction system for hospital)	5
12.	Defibrillator (Emergency resuscitation trolley with defibrillator)	2
13.	Syringe pump	2
14.	Fast infusion system with accessories	2
15.	Laryngoscope with set of adult blades (Macintosh)	1
16.	DVT compression pump (Intermittent pneumatic compression device)	1
17.	Stretcher, patient, with side rails	2
18.	Trolley Emergency with drawers	3
19.	Worktable stainless	3
20.	Table instrument stainless steel 2 trays	2
21.	Revolving Stool	2
22.	Medical cabinet instruments with double door glass	1
23.	Medical cabinet instruments with double door close	1
24.	Hot Air Sterilizer (70 Liter capacity)	1
25.	IV stands	5
26.	Foot stool two steps	1
27.	ICU bed	2
28.	Gynecological examination table	2
29.	Thermo scanner	5
30.	ECG with 12 channels	1
31.	Plasma thawing system	1
32.	Wheelchair	3
33.	Patient bed 2 section	2
34.	Examination couch	2
35.	Bedside cabinet	4
36.	Overbed table	4
37.	Bed screen hospital on castors	5
38.	Pharmacy refrigerator LABCOLD 36 l 540 mm x450 mm x510 mm	1
39.	Refrigerator (200 L capacity)	1
40.	Air Condition (18 L capacity)	2
41.	LCD Television unit(42 Inch)	1
42.	LCD Television unit(55 Inch)	1

43.	Mature electric blanket	3
44.	Small oxygen portable cylinder5 liter	4
45.	Endotracheal tubes 7 and 7.5 (adult)	50
46.	Water Dispenser	2
47.	Shoe Cover machine (automatic)	2
48.	Table, instruments, Mayo type, stainless steel, on castors	3

