



GVERNUL
REPUBLICII
MOLDOVA



Cofinanțat de
Uniunea Europeană



RECENSĂMÂNTUL
POPULAȚIEI ȘI
LOCUIŢELOR 2024

2024 Population and Housing Census

Preliminary data

www.statistica.gov.md

Usually resident population

2024 Census

2 401.2

thou. persons

2014 Census

2 789.2

thou. persons



2024 Population and Housing Census

Preliminary data

www.statistica.gov.md

Usually resident population
as of April 8, 2024 – 2 401.2 thou. persons

Distribution by sex

2024

47.1% 1 131.4 thou. 52.9% 1 269.8 thou.

Males

Females

2014

48.0% 1 337.8 thou. 52.0% 1 451.4 thou.

Note: Data presented based on the estimated usually resident population



GUVERNUL
REPUBLICII
MOLDOVA



Cofinanțat de
Uniunea Europeană



RECENSĂMÂNTUL
POPULAȚIEI ȘI
LOCUIŢELOR 2024

2024 Population and Housing Census

Preliminary data

www.statistica.gov.md

Usually resident population
as of April 8, 2024 – 2 401.2 thou. persons

Distribution by area of residence

2024

46.4%

1 113.7 thou.

Urban

53.6%

1 287.5 thou.

Rural

2014

38.5%

1 073.6 thou.

61.5%

1 715.7 thou.

Note: Data presented based on the estimated usually resident population



GUVERNUL
REPUBLICII
MOLDOVA



Cofinanțat de
Uniunea Europeană



RECENSĂMÂNTUL
POPULAȚIEI ȘI
LOCUIȚELOR 2024

2024 Population and Housing Census

Preliminary data

www.statistica.gov.md

Usually resident population
as of April 8, 2024 – 2 401.2 thou. persons

Distribution by age groups

years old

0-14



2024

19.2%
460.7 thou.

2014

17.9%
500.5 thou.

15-24



10.6%
255.4 thou.

14.7%
409.3 thou.

25-64



52.0%
1 247.9 thou.

56.1%
1 564.4 thou.

65+



18.2%
437.2 thou.

11.3%
315.0 thou.

Note: Data presented based on the estimated usually resident population



GVERNUL
REPUBLICII
MOLDOVA



Cofinanțat de
Uniunea Europeană



RECENSĂMÂNTUL
POPULAȚIEI ȘI
LOCUIŢELOR 2024



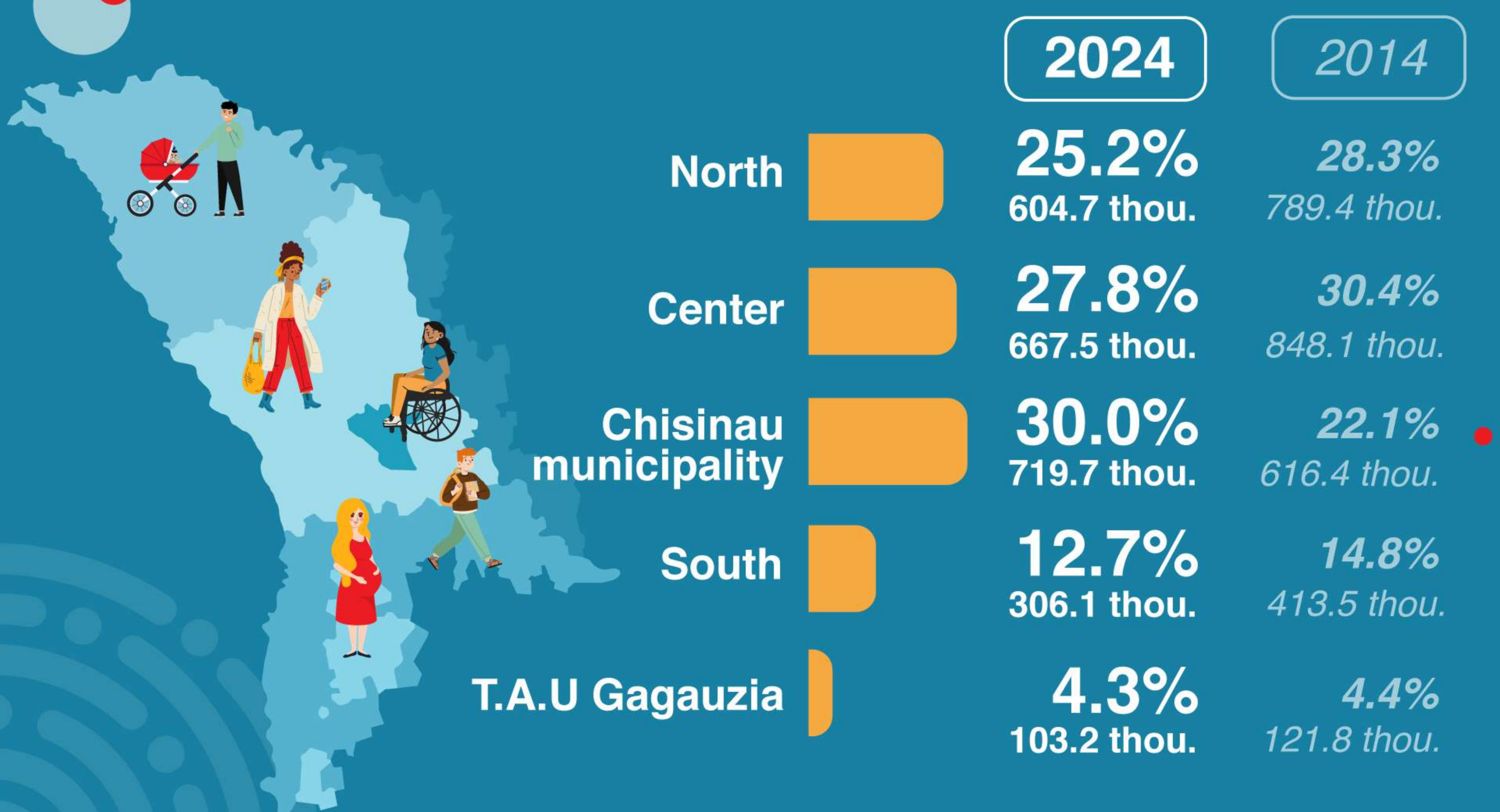
2024 Population and Housing Census

Preliminary data

www.statistica.gov.md

Usually resident population
as of April 8, 2024 – 2 401.2 thou. persons

Distribution by development regions



Note: Data presented based on the estimated usually resident population

2024 Population and Housing Census

Preliminary data

www.statistica.gov.md

Usually resident population
as of April 8, 2024 – 2 401.2 thou. persons

Distribution by citizenship

2024

83.4%

15.6%

0.9%



Citizens of RM



Citizens of RM
and other states



Citizens of
other states*

2014

93.9%

5.6%

0.5%

Note: Data presented based on the enumerated usually resident population
*Including stateless persons



GUVERNUL
REPUBLICII
MOLDOVA



Cofinanțat de
Uniunea Europeană



RECENSĂMÂNTUL
POPULAȚIEI ȘI
LOCUIŢELOR 2024

2024 Population and Housing Census

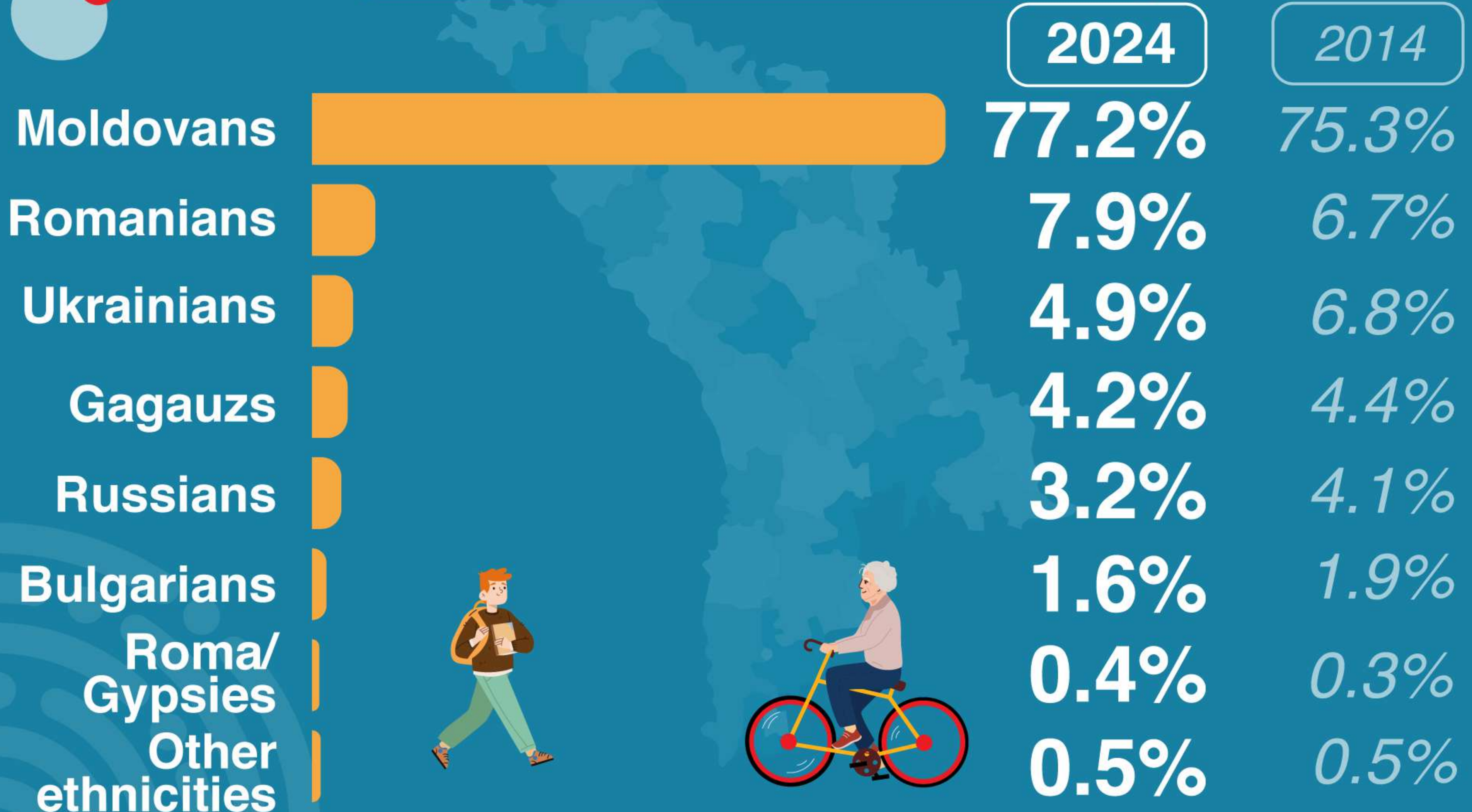
Preliminary data

www.statistica.gov.md

Usually resident population
as of April 8, 2024 – 2 401.2 thou. persons

Distribution by ethnicity

(out of total persons who declared ethnicity)



Note: Data presented based on the enumerated usually resident population



GUVERNUL
REPUBLICII
MOLDOVA



Cofinanțat de
Uniunea Europeană



RECENSĂMÂNTUL
POPULAȚIEI ȘI
LOCUIŢELOR 2024

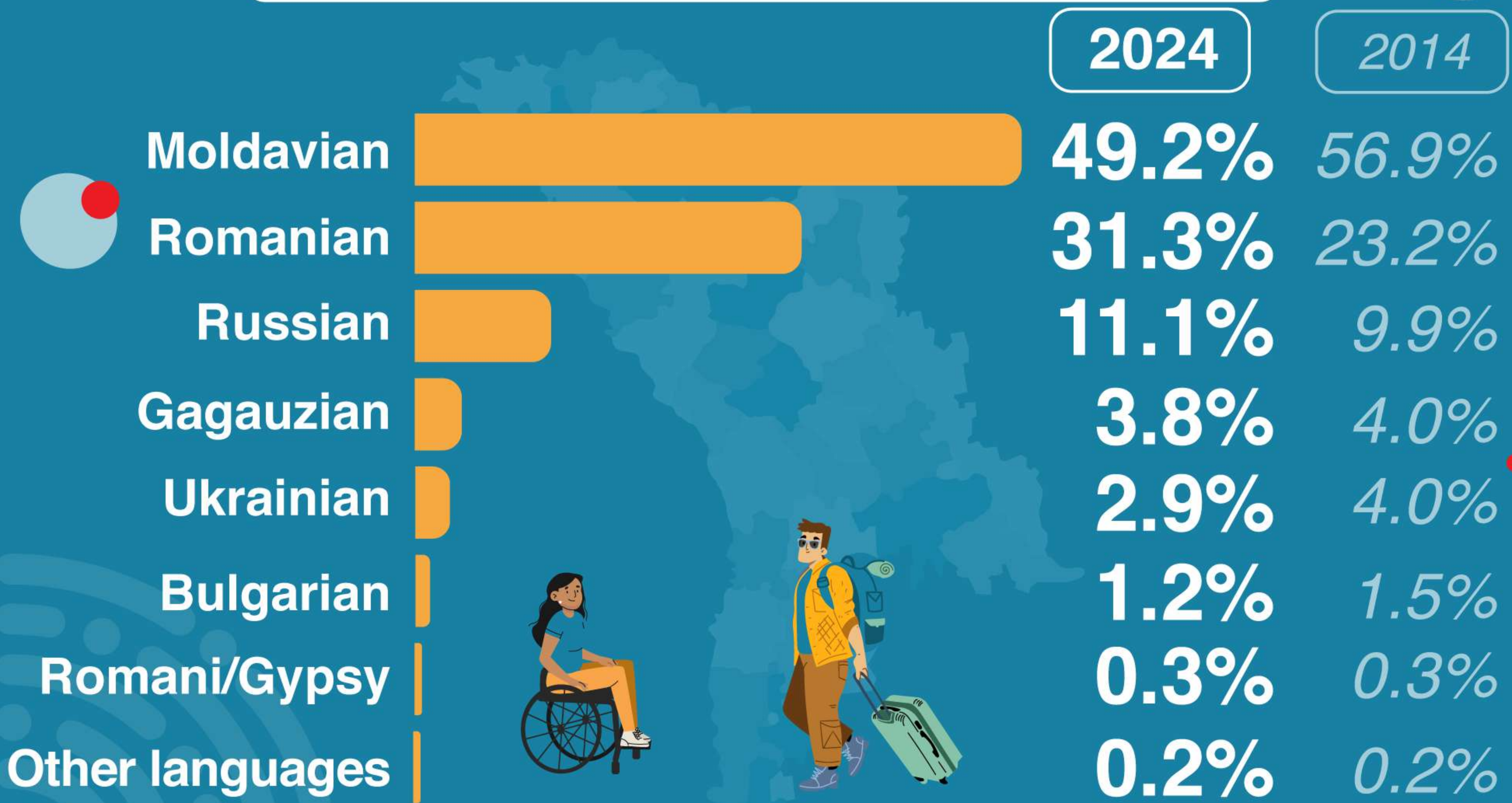
2024 Population and Housing Census

Preliminary data

www.statistica.gov.md

Usually resident population as of April 8, 2024 – 2 401.2 thou. persons

Distribution by mother tongue *(out of total persons who declared their mother tongue)*



Note: Data presented based on the enumerated usually resident population



GUVERNUL
REPUBLICII
MOLDOVA



Cofinanțat de
Uniunea Europeană



RECENSĂMÂNTUL
POPULAȚIEI ȘI
LOCUIŢELOR 2024

2024 Population and Housing Census

Preliminary data

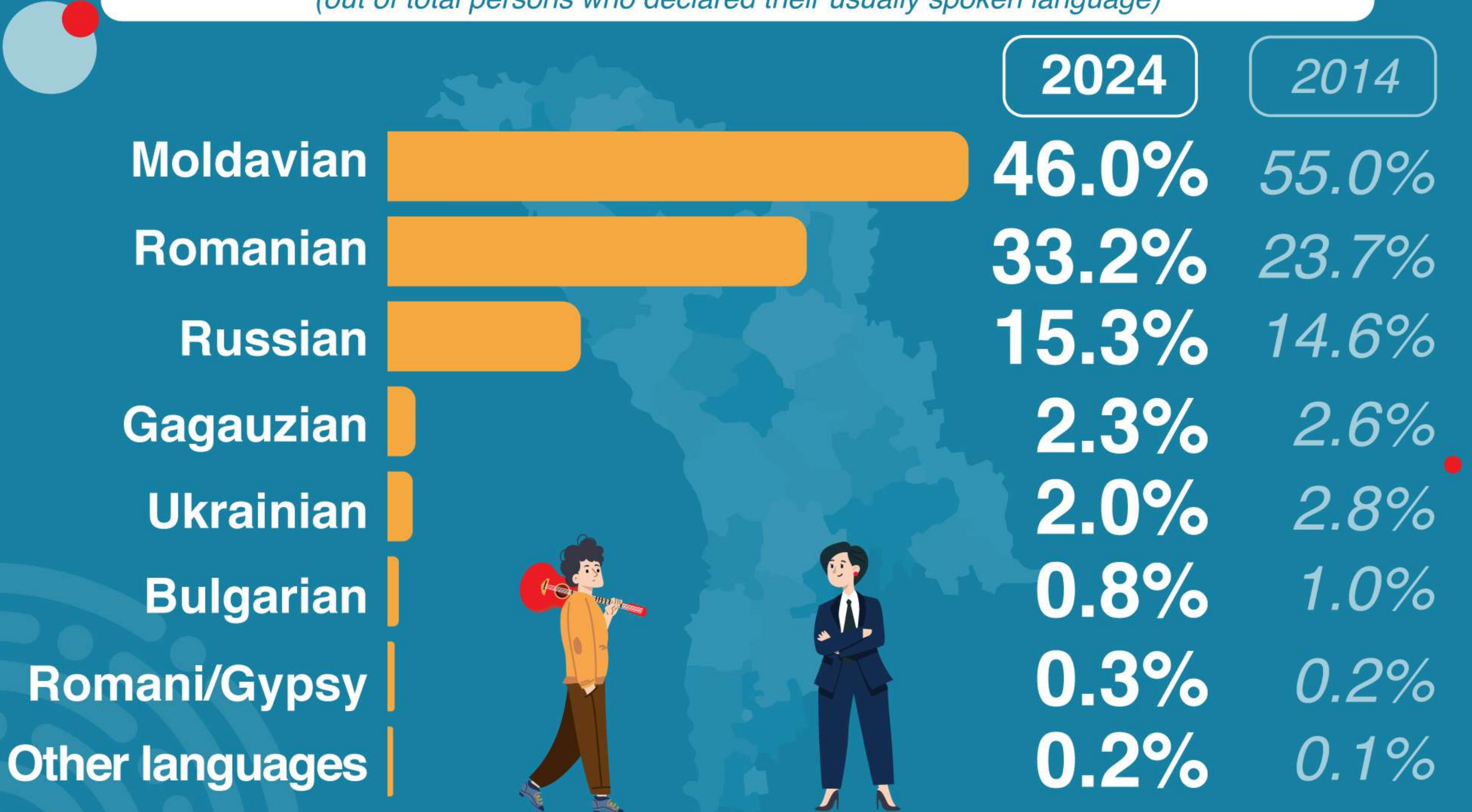
www.statistica.gov.md

Usually resident population

as of April 8, 2024 – 2 401.2 thou. persons

Distribution by usually spoken language

(out of total persons who declared their usually spoken language)



Note: Data presented based on the enumerated usually resident population

2024 Population and Housing Census

Preliminary data

www.statistica.gov.md

Usually resident population
as of April 8, 2024 – 2 401.2 thou. persons

Distribution by religion

(out of total persons who declared their religion)

	2024	2014
Orthodox	95.0%	96.1%
Baptist	1.1%	0.8%
Jehovah's Witnesses	0.7%	0.7%
Pentecostal	0.5%	0.2%
Adventist	0.3%	0.3%
Plymouth Brethren	0.3%	0.5%
Old Believers (Old Rite Russian Orthodox)	0.2%	0.1%
Islam	0.1%	0.2%
Roman Catholics	0.1%	0.1%
Other religions	0.3%	0.5%
Atheist	0.6%	0.6%
Without religion	0.8%	0.0%

Note: Data presented based on the enumerated usually resident population





GUVERNUL
REPUBLICII
MOLDOVA



Cofinanțat de
Uniunea Europeană



RECENSĂMÂNTUL
POPULAȚIEI ȘI
LOCUIŢELOR 2024

2024 Population and Housing Census

Preliminary data

www.statistica.gov.md

Usually resident population

as of April 8, 2024 – 2 401.2 thou. persons

Distribution by country of birth

Born in the
Republic of Moldova

95.9%

2024

Born in other countries

4.1%



96.3%

2014



3.7%



Note: Data presented based on the enumerated usually resident population

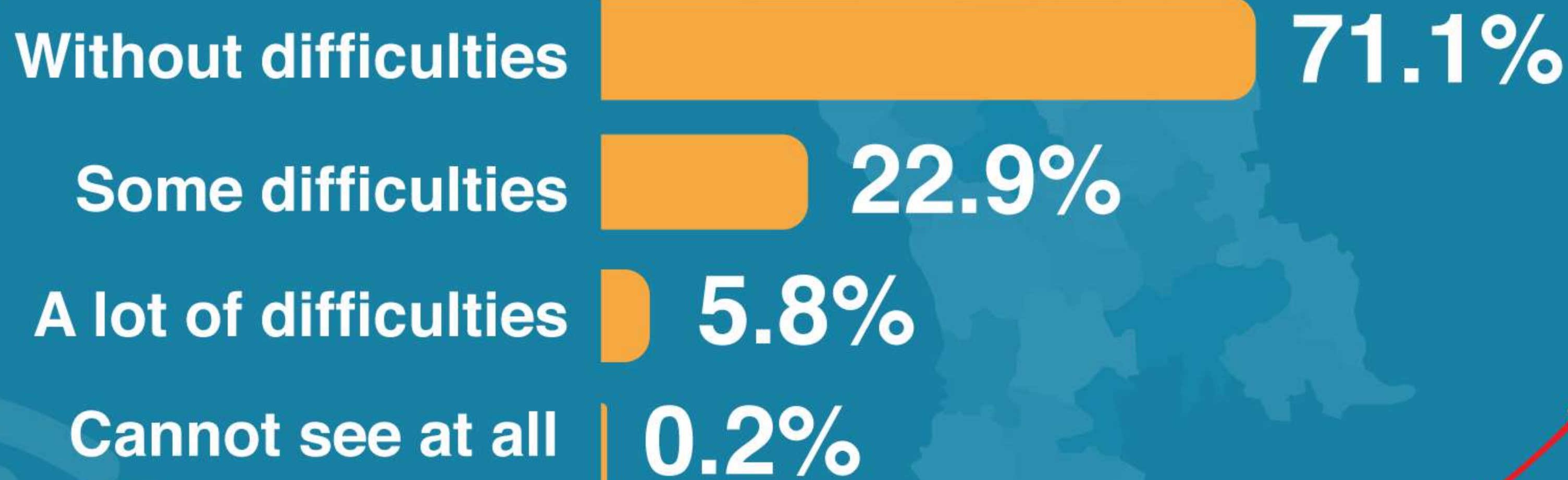
2024 Population and Housing Census

Preliminary data

www.statistica.gov.md

Usually resident population
as of April 8, 2024 – 2 401.2 thou. persons

Seeing difficulties
in carrying out daily activities
(even if wearing glasses or contact lenses)



Note: Data presented based on the enumerated usually resident population



GUVERNUL
REPUBLICII
MOLDOVA



Cofinanțat de
Uniunea Europeană



RECENSĂMÂNTUL
POPULAȚIEI ȘI
LOCUIŢELOR 2024

2024 Population and Housing Census

Preliminary data

www.statistica.gov.md

Usually resident population

as of April 8, 2024 – 2 401.2 thou. persons

Hearing difficulties
in carrying out daily activities
(even if wearing a hearing aid)



Without difficulties



89.1%

Some difficulties



8.6%

A lot of difficulties



2.1%

Cannot hear at all



0.1%



Note: Data presented based on the enumerated usually resident population

2024 Population and Housing Census

Preliminary data

www.statistica.gov.md

Usually resident population
as of April 8, 2024 – 2 401.2 thou. persons

Moving difficulties
in carrying out daily activities
(walking and climbing stairs)



Without difficulties



80.6%

Some difficulties



11.5%

A lot of difficulties



6.8%

Cannot walk or
climb stairs at all



1.0%





GUVERNUL
REPUBLICII
MOLDOVA



Cofinanțat de
Uniunea Europeană



RECENSĂMÂNTUL
POPULAȚIEI ȘI
LOCUIŢELOR 2024

2024 Population and Housing Census

Preliminary data

www.statistica.gov.md

Usually resident population

as of April 8, 2024 – 2 401.2 thou. persons

Memory/concentration difficulties
in carrying out daily activities
(remembering)



Without difficulties



89.9%

Some difficulties



8.2%

A lot of difficulties



1.6%

Cannot memorize at all



0.2%



Note: Data presented based on the enumerated usually resident population